

# Product Sheet

## Finish Primer 442

**ALEXSEAL®**  
Yacht Coatings

### The Foundation for an Outstanding "Wet Look"

Experience the best Finish Primer in the marine market — with its exceptional adhesion qualities, sanding characteristics and highest film build per coat, the **ALEXSEAL® Finish Primer 442** enhances the DOI of Topcoats to achieve impressive results. The product is available in White and Gray.

For quick and easy repairs, we offer a faster drying version in our Finish product line – **Fast Spot Primer 414**.

**ALEXSEAL® Finish Primer 442** delivers best results as part of the complete **ALEXSEAL® System**, but can be used with different topcoats, too.

Premium Topcoat

**Finish Primer**

High Build Surfacer

Fairing Compound

Protective Primer



**In Stock**

Ask Your Local Sales Rep

### Your Benefits

- Highest film build per coat
- Exceptional sanding characteristics
- Enhances the "wet look" of topcoats
- Advanced adhesion qualities
- Can be used with different topcoats

#### Trade Names:

ALEXSEAL® Finish Primer 442 (Mixing ratio 1:1 by volume)  
P4420 ALEXSEAL® Finish Primer 442 White  
P4423 ALEXSEAL® Finish Primer 442 Gray  
C4427 ALEXSEAL® Finish Primer 442 Converter  
R4042 ALEXSEAL® Epoxy Primer Reducer  
A4429 ALEXSEAL® Accelerator Finish Primer 442

#### Mankiewicz Coatings LLC

1200 Charleston Regional Parkway  
Charleston, SC 29492, USA  
Tel. +1 843 654 7755

#### Mankiewicz Gebr. & Co.

Georg-Wilhelm-Strasse 189  
21107 Hamburg, Germany  
Tel. +49 40 751030

Instagram: [instagram.com/alexsealpaint](https://www.instagram.com/alexsealpaint)  
Facebook: [fb.com/AlexsealYachtCoatings](https://www.facebook.com/AlexsealYachtCoatings)

[WWW.ALEXSEAL.COM](http://WWW.ALEXSEAL.COM)

#### Use of ALEXSEAL® products

Please be note that all ALEXSEAL® products are intended for professional use only and the application process must be carried out by professional users in accordance with the respective material data sheets. The information contained in this data sheet as well as in any ALEXSEAL® material data sheet is based on our level of research and development. Revisal by the user with regard to the intended aim is necessary due to the diverse processing and application possibilities. In case of any doubts regarding the properties and use of our product, please contact your local dealer. Any liability on part of Mankiewicz for faulty applications and / or improper use and any damage arising thereof is expressly excluded whether based on warranty, contract law, torts, negligence, strict liability, misrepresentation or any other area of law except as required by mandatory applicable law.

# Product Sheet

## Flat Finish 555

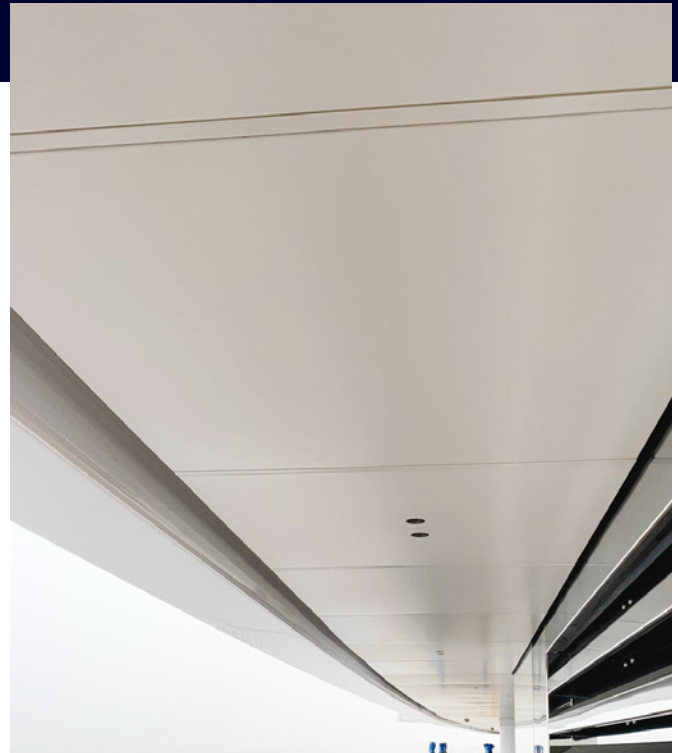
**ALEXSEAL**<sup>®</sup>  
Yacht Coatings

### Topcoat Especially Designed for a Uniform Flat Finish

**ALEXSEAL**<sup>®</sup>'s new Flat Finish 555, provides a consistent mat finish for dedicated areas on your project, e.g. ceiling panels. With its simple one-coat application process, even under the most challenging application conditions, you can achieve an even mat finish without having to do multiple applications.

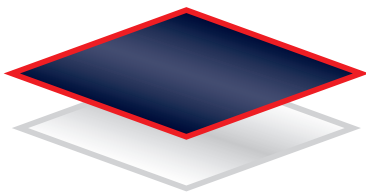
**ALEXSEAL**<sup>®</sup> Flat Finish 555 is available in colors listed below.

For best results, use **ALEXSEAL**<sup>®</sup> Flat Finish 555 as part of the **ALEXSEAL**<sup>®</sup> finishing system.



#### Flat Finish

Finish Primer



**Now available**

Ask Your Local Sales Rep

### Your Benefits

- One-coat application
- Uniform flat finish
- Fast drying
- High scratch and UV resistance

#### Trade Names:

ALEXSEAL<sup>®</sup> Flat Finish 555 (Mixing ratio 7:1 by volume)

F9003 ALEXSEAL<sup>®</sup> Flat Finish 555 Signal White (near RAL 9003)

F9010 ALEXSEAL<sup>®</sup> Flat Finish 555 Pure White (near RAL 9010)

F9016 ALEXSEAL<sup>®</sup> Flat Finish 555 Traffic White (near RAL 9016)

F7035 ALEXSEAL<sup>®</sup> Flat Finish 555 Light Gray (near RAL 7035)

F9005 ALEXSEAL<sup>®</sup> Flat Finish 555 Jet Black (near RAL 9005)

C5556 ALEXSEAL<sup>®</sup> Flat Finish 555 Converter

R5557 ALEXSEAL<sup>®</sup> Flat Finish 555 Reducer

#### Use of ALEXSEAL<sup>®</sup> products

Please be note that all ALEXSEAL<sup>®</sup> products are intended for professional use only and the application process must be carried out by professional users in accordance with the respective material data sheets. The information contained in this data sheet as well as in any ALEXSEAL<sup>®</sup> material data sheet is based on our level of research and development. Revisal by the user with regard to the intended aim is necessary due to the diverse processing and application possibilities. In case of any doubts regarding the properties and use of our product, please contact your local dealer. Any liability on part of Mankiewicz for faulty applications and / or improper use and any damage arising thereof is expressly excluded whether based on warranty, contract law, torts, negligence, strict liability, misrepresentation or any other area of law except as required by mandatory applicable law.

#### Mankiewicz Coatings LLC

1200 Charleston Regional Parkway  
Charleston, SC 29492, USA  
Tel. +1 843 654 7755

#### Mankiewicz Gebr. & Co.

Georg-Wilhelm-Strasse 189  
21107 Hamburg, Germany  
Tel. +49 40 751030

 [instagram.com/alexsealpaint](https://www.instagram.com/alexsealpaint)

 [fb.com/AlexsealYachtCoatings](https://www.facebook.com/AlexsealYachtCoatings)

[WWW.ALEXSEAL.COM](http://WWW.ALEXSEAL.COM)

# Product Sheet

## Interior Primer 178

## Interior Topcoat 578

**ALEXSEAL®**  
Yacht Coatings

### Minimum Odor, Maximum Durable Interior Coating System

The **ALEXSEAL®** Interior Coating system has been specially designed for the interior areas of yachts, that need a high durability coating that provides high corrosion protection.

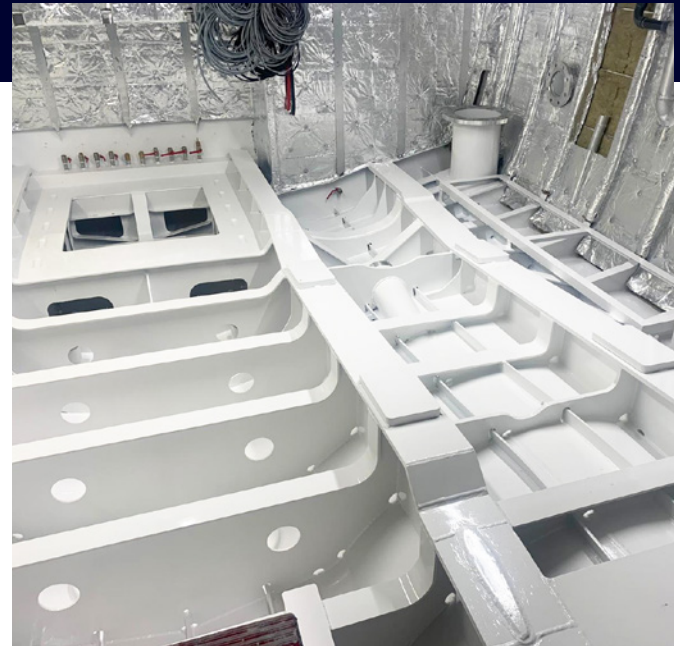
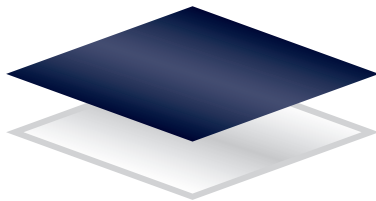
**ALEXSEAL® Interior Primer 178** protects all kinds of metal substrates, that are throughout the interior of a yacht. In areas that do not need a high gloss topcoat, **Interior Primer 178** can be a stand-alone primer. It is available in white and gray colors.

**ALEXSEAL® Interior Topcoat 578** comes in high gloss and is extremely durable and resistant to abrasion, solvents, chemicals, and hydraulic oils. It is available in **ALEXSEAL®** standard colors.

Both products have been approved by IMO Resolution MSC.307 (88)-(FTP-Code 2010) as marine paint with low flame spread characteristics.

Even under difficult application conditions **ALEXSEAL®** Interior products are easy to apply by spray, roller, or brush.

**Interior Topcoat**  
**Interior Primer**



### Your Benefits

- High corrosion protection
- Very high chemical & mechanical resistance
- IMO approved
- Fast drying and over coating times
- Minimum odor



**Now available**  
Ask Your Local Sales Rep

#### Trade Names:

ALEXSEAL® Interior Primer 178 (Mixing ratio 4:1 by volume)  
P1780 ALEXSEAL® Interior Primer 178 White  
P1783 ALEXSEAL® Interior Primer 178 Light Gray  
C1787 ALEXSEAL® Interior Primer Converter  
R1789 ALEXSEAL® Interior Primer Reducer Spray & Brush

ALEXSEAL® Interior Topcoat 578 (Mixing ratio 4:1 by volume)  
N.... ALEXSEAL® Interior Topcoat 578 (Base Color)  
C6402 ALEXSEAL® Interior Topcoat Converter  
R6062 ALEXSEAL® Interior Topcoat Reducer  
R6068 ALEXSEAL® Interior Topcoat Reducer Slow

#### Use of ALEXSEAL® products

Please be note that all ALEXSEAL® products are intended for professional use only and the application process must be carried out by professional users in accordance with the respective material data sheets. The information contained in this data sheet as well as in any ALEXSEAL® material data sheet is based on our level of research and development. Revisal by the user with regard to the intended aim is necessary due to the diverse processing and application possibilities. In case of any doubts regarding the properties and use of our product, please contact your local dealer. Any liability on part of Mankiewicz for faulty applications and / or improper use and any damage arising thereof is expressly excluded whether based on warranty, contract law, torts, negligence, strict liability, misrepresentation or any other area of law except as required by mandatory applicable law.

#### Mankiewicz Coatings LLC

1200 Charleston Regional Parkway  
Charleston, SC 29492, USA  
Tel. +1 843 654 7755

Instagram: [instagram.com/alexsealpaint](https://www.instagram.com/alexsealpaint)  
Facebook: [fb.com/AlexsealYachtCoatings](https://www.facebook.com/AlexsealYachtCoatings)

#### Mankiewicz Gebr. & Co.

Georg-Wilhelm-Strasse 189  
21107 Hamburg, Germany  
Tel. +49 40 751030

[WWW.ALEXSEAL.COM](http://WWW.ALEXSEAL.COM)



# Product Sheet

## Fairing Compound 242

**ALEXSEAL®**  
Yacht Coatings

### Fairing for All Weather Conditions

**ALEXSEAL®**'s new **Fairing Compound 242**, completes our fairing compound portfolio. 242 has outstanding performance for all types of climates, so in both hot and cold climates, your yacht will benefit from **ALEXSEAL®**'s new fairing compound. 242 is especially designed for yachts with dark hulls, that need the extra flexibility while traveling to extreme climates. Neither heat nor ice and snow will harm this fairing.

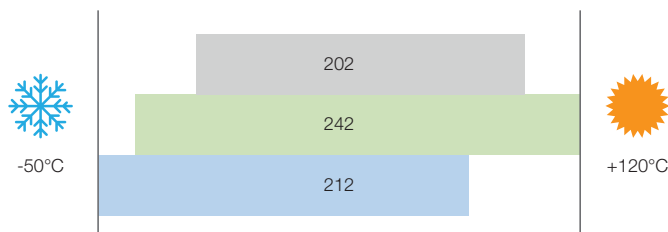
**ALEXSEAL® Fairing Compound 242** has outstanding sag resistance and with nearly no air pockets, for an easier application. And with its limited shrink back, reworks of the faired areas will be reduced to a minimum.



### Your Benefits

- Flexibility to withstand both hot and cold climates
- Outstanding sag resistance
- Reduction of air pockets
- Minimum shrinkage
- Standard and fast cure converters available

Wide temperature range of **ALEXSEAL®** Fairing Compounds



### Use of ALEXSEAL® products

Please be note that all ALEXSEAL® products are intended for professional use only and the application process must be carried out by professional users in accordance with the respective material data sheets. The information contained in this data sheet as well as in any ALEXSEAL® material data sheet is based on our level of research and development. Revisal by the user with regard to the intended aim is necessary due to the diverse processing and application possibilities. In case of any doubts regarding the properties and use of our product, please contact your local dealer. Any liability on part of Mankiewicz for faulty applications and / or improper use and any damage arising thereof is expressly excluded whether based on warranty, contract law, torts, negligence, strict liability, misrepresentation or any other area of law except as required by mandatory applicable law.

### Trade Names

ALEXSEAL® Fairing Compound 242 (Mixing ratio 1:1 by volume)  
P2420 ALEXSEAL® Fairing Compound 242 Base  
C2427 ALEXSEAL® Fairing Compound 242 Converter  
C2425 ALEXSEAL® Fairing Compound 242 Converter Fast

### Mankiewicz Coatings LLC

1200 Charleston Regional Parkway  
Charleston, SC 29492, USA  
Tel. +1 843 654 7755

Instagram: [instagram.com/alexsealpaint](https://www.instagram.com/alexsealpaint)  
Facebook: [fb.com/AlexsealYachtCoatings](https://www.facebook.com/AlexsealYachtCoatings)

### Mankiewicz Gebr. & Co.

Georg-Wilhelm-Strasse 189  
21107 Hamburg, Germany  
Tel. +49 40 751030

[WWW.ALEXSEAL.COM](http://WWW.ALEXSEAL.COM)

# Product Sheet

# Roll Additive 501

**ALEXSEAL®**  
Yacht Coatings

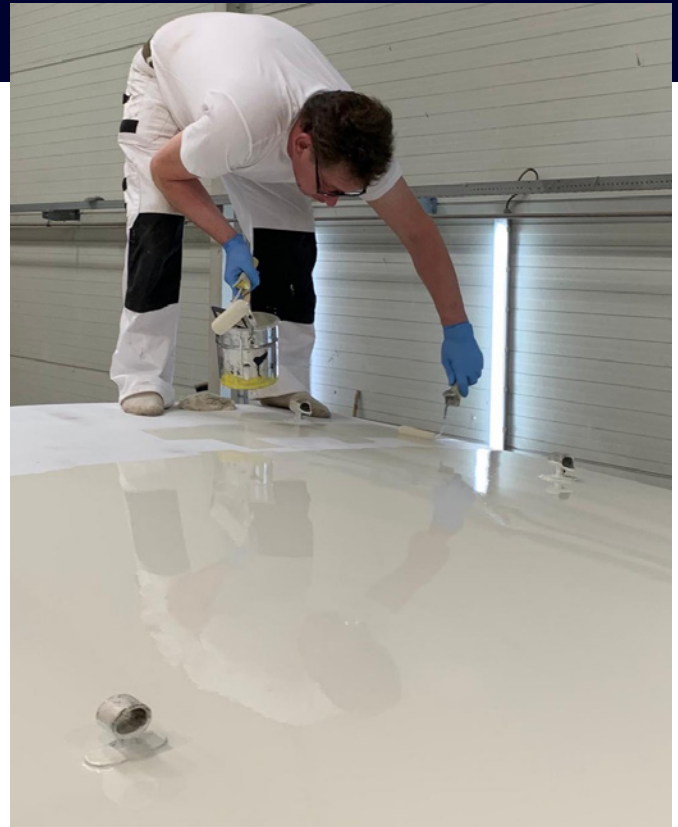
## Revolutionary Topcoat Application by Rolling

Our new **ALEXSEAL® Topcoat 501 Roll Additive** will be a revolution for the smaller boatyards and applicators who prefer working with brush and roller for topcoat applications.

**ALEXSEAL® Topcoat 501 Roll Additive** is an auxiliary product for **ALEXSEAL® Topcoat 501 Roll Additive**. It improves the leveling of the surface during the application by brush or roller.

The additive is very easy to handle and is added to the ready mixed **ALEXSEAL® Topcoat 501 Roll Additive** right before the application. Add one capful or 10ml of **ALEXSEAL® Topcoat 501 Roll Additive** per already mixed quart or liter (1% to the ready to paint mixture) right before the application.

The product is available in a 4 US ounces packaging. Try it out and be convinced of the result!



**Now available**  
Ask Your Local Sales Rep

## Your Benefits

- Reduction of air bubbles during application by brush or roller
- Better flow of the topcoat
- Perfect & even application results

### Trade Names:

A5018 ALEXSEAL® Topcoat Roll Additive 501 (4 U.S. oz)

### Use of ALEXSEAL® products

Please be note that all ALEXSEAL® products are intended for professional use only and the application process must be carried out by professional users in accordance with the respective material data sheets. The information contained in this data sheet as well as in any ALEXSEAL® material data sheet is based on our level of research and development. Revisal by the user with regard to the intended aim is necessary due to the diverse processing and application possibilities. In case of any doubts regarding the properties and use of our product, please contact your local dealer. Any liability on part of Mankiewicz for faulty applications and / or improper use and any damage arising thereof is expressly excluded whether based on warranty, contract law, torts, negligence, strict liability, misrepresentation or any other area of law except as required by mandatory applicable law.

### Mankiewicz Coatings LLC

1200 Charleston Regional Parkway  
Charleston, SC 29492, USA  
Tel. +1 843 654 7755

Instagram: [instagram.com/alexsealpaint](https://www.instagram.com/alexsealpaint)  
Facebook: [fb.com/AlexsealYachtCoatings](https://www.facebook.com/AlexsealYachtCoatings)

### Mankiewicz Gebr. & Co.

Georg-Wilhelm-Strasse 189  
21107 Hamburg, Germany  
Tel. +49 40 751030

[WWW.ALEXSEAL.COM](http://WWW.ALEXSEAL.COM)