

CARE AND MAINTENANCE

Agenda



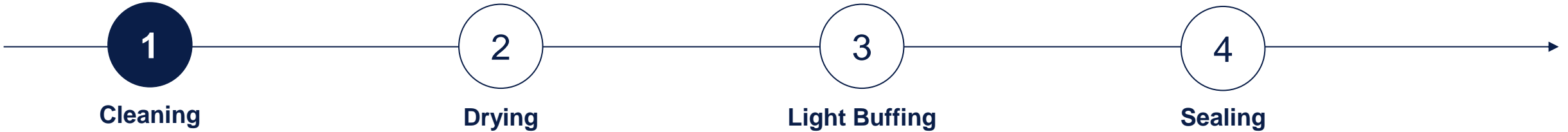
- 1. Cleaning & Sealing**
- 2. Removing salt and stains**
- 3. Special Finishes**
- 4. Effects of false care**

Cleaning & Sealing

Process Description – Overview



Process Description – Cleaning/ Washing



- Rinse down the paint surface with **clean fresh water**
- A **water softener** may be needed to overcome hard water spots
- Paint surface should be washed **once a week**
- **Mild detergent with a neutral PH** formulated specifically for paint finishes
- **Do not use** abrasive brushes, pads or cleaning agents
- **Use only** soft clean wash mitts and brushes
- **Dry the surface** to prevent water spots

Products – ALEXSEAL Premium Wash Down Concentrate



Characteristics

- Designed to clean ALEXSEAL topcoats
- Neutral in PH
- Biodegradable
- Does not include abrasives
- Free rinsing which decreases drying time
- Cleans dirt, grease/oil stains and salt off surfaces
- Will not remove wax or polish from the painted surface
- Available in US quart and 1,25 gallon containers
- Refillable 'Tip 'N' Measure' container



Products – Wash Down for Exterior Surface



Other recommendations

- 3M Multi-Purpose Boat Soap
- Aquatech 501 Boat Wash Concentrate
- Boat Life Boat Soap
- Liquid Glass® Wash Concentrate
- Meguiar's Flagship Premium Marine Wash
- Sudbury Boat Soap



Products - Equipment

Using the correct equipment is very essential

- Brushes → only use soft fiber brushes on painted surfaces
- Sponges → either natural or synthetic
- Cloths → lint free cloths, high quality micro fibre cloths will produce excellent results without the risk of scratching the paintwork
- Washing Gloves → allow more control over the chemical and detergent impact on sensitive surfaces

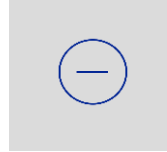


Cleaning Procedure – Do's & Don'ts



Do's

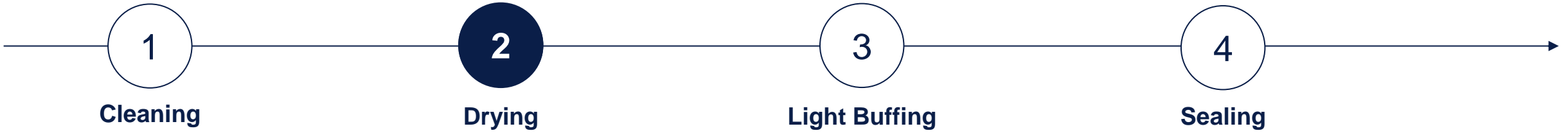
- Use cleaning equipment to clean the surface
- Take away any surface contamination immediately, e.g. bird dropping, oil, sun cream, sand, etc.
- Use pH neutral cleaners
- Use quality waxes



Don'ts

- Clean hot surfaces in direct sunlight
- Push the surface too hard with the cleaning equipment
- Use abrasives, scratch pads, nylon woven pads or polishing compounds
- Allow contact between topcoat and teak cleaners
- Use metal polishes
- Use household cleaners and concentrates (as they may have a high alkalinity and therefore tend to be too harsh)
- Use oxalic acid based products or teak cleaners

Process Description – Drying



- After washing, get the paintwork dried **as soon as possible**
- The direct drying after washing is **essential to prevent water marks**
- For drying use proper and clean equipment

Products - Equipment

Using the correct equipment is very essential

- Synthetic chamois and clean towelling are the best traditional allies for this task
- Water scraping blades, a soft, flexible silicone blade that can remove water without scratching the surface
 - Water blades can help to dry the surface faster than a chamois rag



Process Description – Light Buffing



- Occasionally light buffing **may be needed to restore the finish**
- Buffing must be done **by hand or slow speed buffing machine**
- Using a compound / polish and a pad recommended by the product's manufacturer
- **Use a protective wax or polymer sealer** to help maintain the gloss in the buffed areas
- **Avoid aggressive buffing** which could remove excessive coating from the surface and reduce durability of the paint
- **Apply polymer sealer or a high quality wax** at least 2-3 times per year
- Use a protective wax or polymer sealer after every polishing to help **maintain the gloss** in the buffed areas and seal the “open” surface

Products – Light Buffing

Product recommendations

- **3M Perfect-It Rubbing Compound (06085/06086)**
by slow speed machine with foam pad or yellow bonnet
- **3M Imperial Compound and Finishing Material (6044 / 6045)**
by slow speed machine with foam pad or yellow bonnet

Or alternative products designed for buffing paint



Products – One-Way Microfiber Cloth

- As one example **DuPont Sontara Cloth** is to be used for all Topcoat 501 painted surfaces and stainless steel surfaces. This unique non-woven cloth made by a water needling process does not contain:
 - Any silicone, binders, fillers or other chemical
 - Additives which could hurt the paint
- DuPont features include the fabric's mechanical strength and its very low lint content.
This degreasing cloth is crucial for reducing paint defects.



Products – Polishing after Buffing

Product recommendations

- **3M Perfect-It Machine Polish** (06064/06065)
by slow speed machine with Black Foam Pad (05725)
- For dark colors: **3M Perfect-It Ultra-Fine Polish** (06068/06069)
by slow speed machine with 3M Blue Foam Pad (05733)
- **3M Finesse-It II – Finishing Material** (5928 / 5929)
by hand or slow speed machine and foam pad

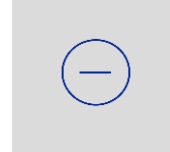


Buffing and Polishing- Do's & Don'ts



Do's:

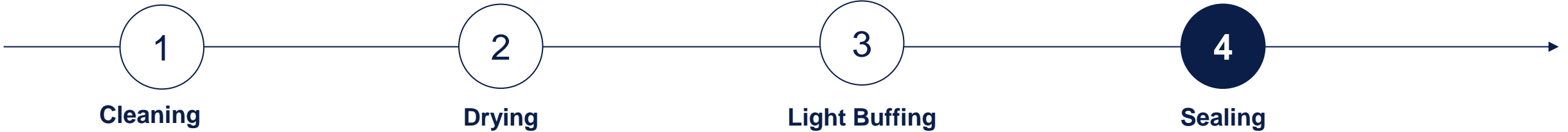
- Clean the surface prior starting
- Allow the surface to dry
- Apply compound evenly
- Use a clean buffing pad
- Place the pad on the surface prior to starting
- Move the buffer in small circular motions
- Start a slow buffing speed



Don'ts

- Cut excessively into the paint layer
- Push down hard on the buffing machine
- Use excessive speed with the buffing pad
- Buff in direct sunlight or if the surface is hot
- Allow the compound to dry on the surface

Process Description – Sealing



- Wash surface with **ALEXSEAL Premium Wash Down Concentrate**
- Rinse and wipe dry
- Apply **ALEXSEAL Premium Polymer Sealer** with a clean cotton cloth or applicator pad
- Let the sealer **dry** to a haze but **not longer than 6 hours**
- **Wipe off** with a second clean cotton cloth or microfiber towel
- **Apply a high quality wax or polymer sealer** at least 2-3 times per year
- Apply a polymer sealer after every polishing to help **maintain the gloss** in the buffed areas and seal the “open” surface

Products – ALEXSEAL Premium Polymer Sealer



Characteristics

- Non-abrasive
- Synthetic sealer with polyurethane
- UV absorbers will help protect the paint from exposure to the sun and pollution
- Improves the coatings' life expectancy
- Removes mild stains and water spots
- Leaves behind a protective polymer coating which will seal the surface
- Available in US quart and 1,25 gallon containers



Products – Wax Application



Other recommendations

- 3M Scotch Guard Liquid Wax (9061 / 9062)
- Aquatech 201 Premier Polish
- Liquid Glass® Polish / Finish
- Meguiar's Flagship Premium Marine Wax

Or alternative products designed for waxing paint

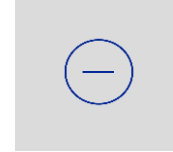


Sealing Procedure – Do's & Don'ts



Do's

- Clean and dry the surface thoroughly before sealing
- Use clean equipment to seal the surface (100% cotton cloth or applicator pad)
- Let the sealer dry to a haze before removing with a clean cotton cloth or microfiber towel



Don'ts

- Let the sealer dry on the surface for more than 6 hours
- Seal hot surfaces in direct sunlight

Removing salt & stains

Cleaning Procedure – Removing Salt Residue

- Remove dried salt residue by **washing the surface with a warm water and white vinegar solution as soon as possible**
- Dilute the distilled white vinegar **1:1** with warm water and wash the surface
- **When finished, rewash** the surface with a mild detergent and clean water
- After deposition on the surface, they can act like an abrasive during washing procedure



Cleaning Procedure – Removing Stains

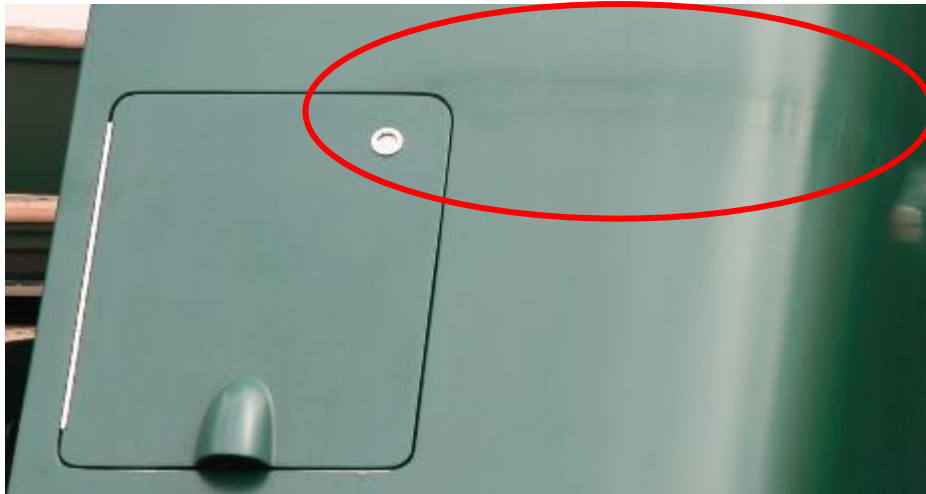


- **Remove stains** as soon as possible
- Some stains can etch the surface of the paint
- If a stain cannot be removed with a mild detergent during the washing process, **solvents may be used** to loosen the stain
- **Start with mild solvents** such as Mineral Spirits or denatured Alcohol
- **Harsher solvents** such as Acetone and Lacquer Thinner should only be **used as a last resort**
- After removing the stain with solvent, **wash the area with a mild detergent and clean water** to remove all solvent residues

Special Finishes

Special Finishes- Matte

- Matte and semigloss finishes tend to need more care in general
- They also get dirty more quickly
- Light buffing is not possible and may cause a higher gloss level

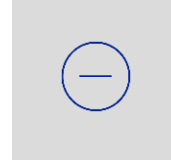


Semi Gloss & Matte Finishes



Do's

- Take extra care with regular cleaning
- A freshly painted surface should dry at minimum 7 days before any form of cleaning process should take place, ideally extend to 21 days drying
- Remove any dirt immediately



Don'ts

- Polishing
- Spot repair
- Wear and tear
- Excessive rubbing
- Never use mechanical washing equipment or hard brushes
- Washing when the surface temperature is above 25-30°C
- Washing in direct sunlight

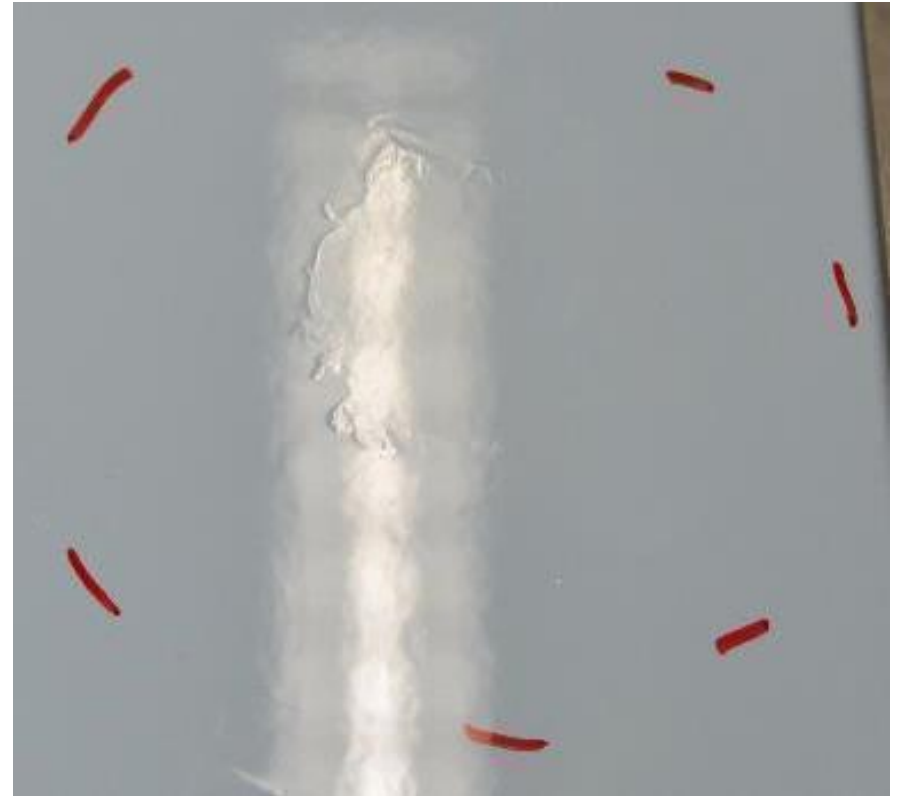
Effects of false care

Effects of false care

Teak deck detergents – effects on paint

- Detergent residues may steadily etch or bleach the paint, when they bake / dry in a slightly softened paint surface caused by hot substrate temperatures.

Never place a wet bucket of teak cleaning detergent on paint work. Within few moments the water can bake in and the paint will be bleached



Effects of false care

Diesel soot – effects on paint

- Diesel soot sticks on the surface, when it comes out of the exhaust pipes (because it is hot)
- When it stays on the surfaces it „burns“ into the paint because of the sun's heat

Remove Diesel soot as soon as possible



Effects of false care

Bird droppings – effects on paint

- As first step bird droppings shall be rinsed off with fresh water before cleaning with any kind of rags
- When they stay on the surfaces they „burn“ into the paint because of the sun's heat

Remove bird droppings as soon as possible



Effects of false care

Rust remover – effects on paint

- Detergent residues may steadily etch or bleach the paint, when they bake / dry in a slightly softened paint surface caused by hot substrate temperatures.

Remove rust remover as soon as possible



Effects of false care

Sunscreen – effects on paint

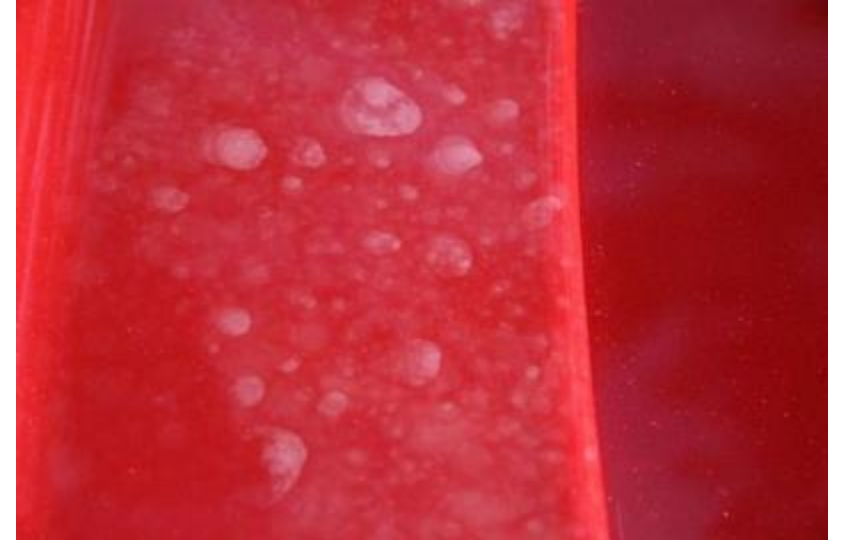
- Residues will stick on the surface and will burn themselves into the paint and damage it
- If they are not removed immediately, it can be virtually impossible to remove them by hand (polishing might be necessary)
- Partial use of ceramic coatings might remove the effect

Remove sunscreen marks immediately



Water Spots

- Often caused by poor process and insufficient time
 - Can often be washed off easily, using a vinegar solution or a proper detergent
 - Results of washing are depending on:
 - The type of mineral
 - the length of time on the surface
 - the temperature in which the mineral may have become baked on
- Complete removal is not always uncomplicated or possible



Water Spotting

Effect on **all** exterior surfaces

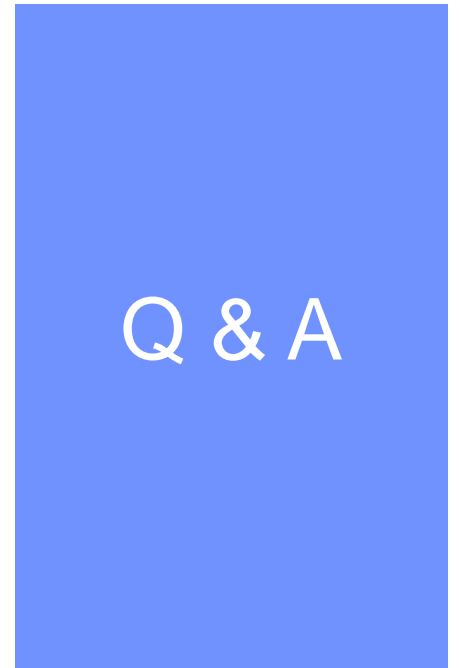
- Like paint, glass, varnishes, metals, gelcoats, etc.
 - Always the same chemical process of the attack
- Main cause of water spotting:
 - Maintenance practices (poor process and inconvenient time)



Care & Maintenance



Long-lasting
high quality
finishes



**Thank you
for your attention!**

We are looking forward to working together.

Imprint



Mankiewicz Unternehmensgruppe

Stammsitz:

Mankiewicz Gebr & Co, (GmbH & Co KG)

Alexseal Yacht Coatings

Georg-Wilhelm-Straße 189

21107 Hamburg/Germany

Telefon: + 49 (40) 751030

Telefax: + 49 (40) 75103510

E-Mail: info@alexseal.com

Amtsgericht Hamburg: HRA 42442

U.Steuer-Ident.-Nr.: DE 118241333

Geschäftsführender Gesellschafter: Michael O. Grau

Die Bearbeitung, Vervielfältigung, Übertragung, Veröffentlichung, Verbreitung und jede Art der Verwertung außerhalb der Grenzen des Urheberrechtes bedürfen der schriftlichen Zustimmung von Mankiewicz Gebr. & Co. (GmbH & Co. KG).

The content of this presentation cannot be modified, copied, reproduced, transferred, published, distributed and used in any way without the written consent of Mankiewicz Gebr. & Co. (GmbH & Co. KG).