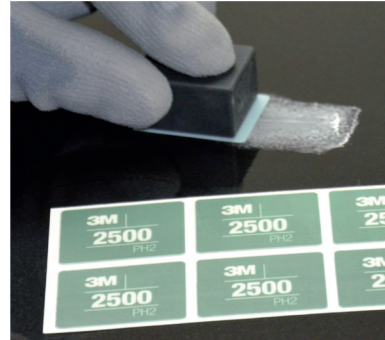


Polishing Process

1a Initial defect removal manual



- Remove the defect with P2500 or P3000 (wet or dry) from the 3M™ Paint Defect Removal Hand System.
- Remove all defects and match texture to adjacent surfaces.
- Wipe surface clean.



3M™ Paint Defect Removal Hand System
33889: Kit | 33889 – 33903:
for different shapes & grades

3M™ Paint Defect Removal Hand System Blocks
33909 – 33912: for different shapes

4 Check



- Use 3M™ Finish Control Spray extensively and wipe surface clean with a white microfiber cloth.
- Inspect the surface.
- If scratches are still visible, repeat step 3.



3M™ Finish Control Spray
55535 – 500 ml

Scotch-Brite™ Microfiber Cloth
2010HLWS – white

1b Initial defect removal machine



- For small areas: Sand the defect with 3M™ Finesse-it™ Trizact™ 466LA 3000 (wet or dry) and a denibber. Remove all defects and match texture to adjacent surfaces. Wipe surface clean.
- For larger areas: Sand the defect with 3M™ Trizact™ Hookit™ 471LA 1500 (wet or dry) and a random orbital sander. Remove all defects and match texture to adjacent surfaces. Wipe surface clean.



For larger areas

3M™ Trizact™ Hookit™ 471LA
05600 – 150 mm, 1500
05601 – 75 mm, 1500

For small areas

3M™ Finesse-it™ Trizact™ 466L
50079 – 32mm, 3000

5 Polish



- Polish the repair area with a buffer set between 1200 – 1800 Max. RPM.
- Use a yellow foam polishing pad flat on the surface with light pressure.
- Reduce pressure and raise speed at the end of buffing process.
- Wipe surface clean with a yellow microfiber cloth.



3M™ Perfect-it™ III Extra Fine PLUS
E80349 – 1 l

3M™ Perfect-it™ Quick Connect Polishing Pad, doubled-sided
50879 - 150mm yellow
50875 - 216mm yellow

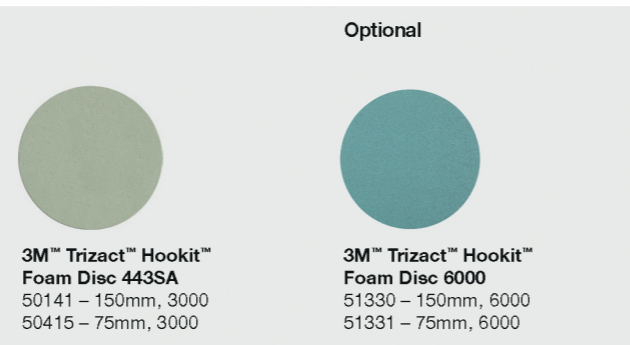
3M™ Quick Connect Adapter
33271 – M14

3M™ Perfect-it™ Microfiber Cloth
50400 – yellow

2 Scratch Refinement



- Refine the scratches with a ROS and 3M™ Trizact™ 3000 Foam Disc used damp. Wipe surface clean with a microfiber cloth.
- **Optional:** Refine the 3000 scratches with a ROS and 3M™ Trizact™ 6000 Foam Disc used damp. Wipe panel clean with a microfiber cloth. This step will save buffing time.



For larger areas

3M™ Trizact™ Hookit™ Foam Disc 443SA
50141 – 150mm, 3000
50415 – 75mm, 3000

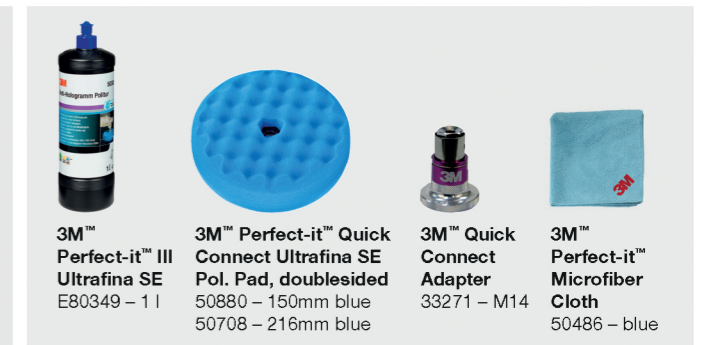
Optional

3M™ Trizact™ Hookit™ Foam Disc 6000
51330 – 150mm, 6000
51331 – 75mm, 6000

Optional for dark colours: Ultrafine Polish



- Polish the repair area with a buffer set between 1200 – 2000 Max. RPM. Use a blue foam polishing pad without any pressure.
- Make sure to have a light film of the polish on the surface during the process.
- Wipe clean with a blue microfiber cloth.



3M™ Perfect-it™ III Ultrafine SE
E80349 – 1 l

3M™ Perfect-it™ Quick Connect Ultrafine SE Pol. Pad, doubled-sided
50880 – 150mm blue
50708 – 216mm blue

3M™ Quick Connect Adapter
33271 – M14

3M™ Perfect-it™ Microfiber Cloth
50486 – blue

3 Compound



- Compound the repair area with a buffer set between 800 – 1200 Max. RPM.
- Use the pad flat on surface with medium pressure. Reduce pressure at the end of buffing process.
- Wipe surface clean with a green microfiber cloth.



3M™ Perfect-it™ III Fast Cut XL
51052 – 1 kg

3M™ Perfect-it™ III Fast Cut PLUS
50417 – 1 kg

3M™ Perfect-it™ Quick Connect Compounding Pad, doubled-sided
50962 – 150mm green
50874 – 216mm green

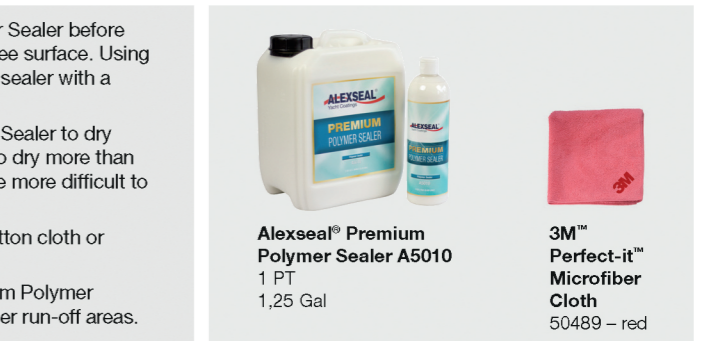
3M™ Quick Connect Adapter
33271 – M14

Scotch-Brite™ Microfiber Cloth
2010HLGN – green

Optional for Protection



- Shake ALEXSEAL® Premium Polymer Sealer before applying the sealer on a clean dust free surface. Using a 100 % cotton cloth don't apply the sealer with a mechanical device.
- Allow ALEXSEAL® Premium Polymer Sealer to dry to a haze. Do not allow the material to dry more than 6 hours before removing, as it may be more difficult to remove.
- Wipe off haze with a 100 % clean, cotton cloth or microfiber towel.
- Multiple coats of ALEXSEAL® Premium Polymer Sealer may be needed to protect water run-off areas.



Alexseal® Premium Polymer Sealer A5010
1 PT
1,25 Gal

3M™ Perfect-it™ Microfiber Cloth
50489 – red